

DEVELOPMENT

MDA

AGENCY

# ORGANIZATION OF A SERVICE STATION



# ABOUT THE PROJECT

THE PROJECT ASSUMES ORGANIZATION OF A SERVICE STATION FOR CARS, AGRICULTURAL MACHINERY USING THE BUILDINGS OF THE KPUP "SLAVGORODSKIY REMSTROY" BASE.

## PROJECT OBJECTIVE:

Improving the quality of services for the population of Slavgorod, providing services for agricultural organizations and peasant households in Southeast districts of Mogilev region

**Location of the project:** The Republic of Belarus, Mogilev region, Slavgorod, st.Komarova 22

**Investment:** 1 200 000 USD

### **Contacts:**

Slavgorod District Executive Committee  
Oktyabrskaya st., 3, Slavgorod , 213245

E-mail: [slavrik@slavgorod.gov.by](mailto:slavrik@slavgorod.gov.by)

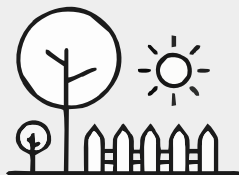
Tel. , + 375 29 1300043, +375 2246 25341





# ABOUT THE PROJECT

## ADVANTAGES OF THE PROJECT



THERE IS A POSSIBILITY OF USING BUILDINGS FOR PRODUCTION AND SERVICE PURPOSES WITH A TOTAL AREA OF ABOUT 1600 SQ.M. ON THE BASIS OF LEASE OR ACQUISITION OF OWNERSHIP RIGHTS FROM THE ASSET HOLDER SLAVGORODSKOE UKP ZHILKOMHOZ.



THE PLATFORM IS PROVIDED WITH UTILITIES



THE BUILDINGS ARE IN A SATISFACTORY TECHNICAL CONDITION.





# PREFERENTIAL TREATMENT: 💰

## INVESTMENT AGREEMENT:



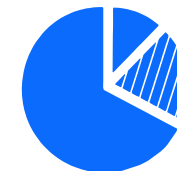
- ✓ provision of a land plot without an auction
- ✓ exemption from payment of customs duties and VAT on the import of technological equipment

## SMALL TOWNS AND COUNTRYSIDE:

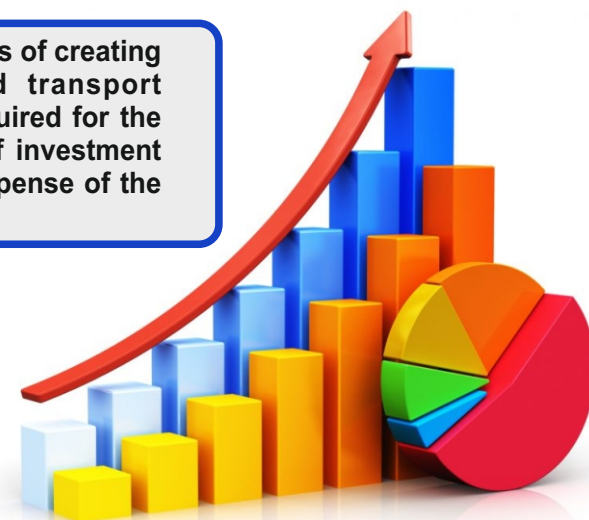


- ✓ exemption from import duties
- ✓ exemption from paying state fees for issuing a license
- ✓ exemption from income tax, property tax, income tax

## SOUTH-EAST DISTRICT OF MOGILEV REGION:



- ✓ exemption from targeted fees and tax incentives
- ✓ reimbursement up to 20% of the cost of capital costs for an investment project
- ✓ financing the costs of creating engineering and transport infrastructure required for the implementation of investment projects at the expense of the budget





# SLAVGORODSKIY DISTRICT

## ABOUT DISTRICT



**13,2 thsd  
people**



**1317 sq.km  
area of  
the district**

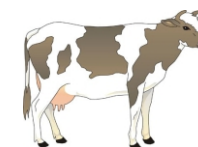
**52,9 thsd HA  
agricultural land  
area**

**26,8 thsd HA  
arable land  
area**

The economic development of the district based on agricultural production. the main directions of which are:



**DIARY  
PRODUCTION**



**CATTLE  
RAISING**



**FORAGE  
HARVESTING**



# PROSPECTIVE INVESTMENT PROJECTS OF MOGILEV REGION



+375 222 74 61 91  
+375 44 582 28 18



[agencymogilev@ya.ru](mailto:agencymogilev@ya.ru)



Belarus, Mogilev,  
boulevard Yubileyniy, 21



## THE AGENCY IS READY TO HELP FOREIGN INVESTORS INTERESTED UN DOING BUSINESS IN BELARUS

- Presentation information on investment opportunities, preferential regimes and benefits, industries, legislation
- Provision of current information on investment projects
- Selection and provision of information on options for land and premises
- Search for potential partners for the implementation of the investment project; organization of meetings, negotiations with potential partners to establish

and support for the investor during the negotiations

- Organization of visits to Mogilev Region (development of a program of stay, assistance in obtaining a visa)
- Representation the interests of the investor in negotiations with government officials on the implementation of investment projects, as well as on improving business practices in Mogilev Region



+375 222 74 61 91  
+375 44 582 28 18



[agencymogilev@ya.ru](mailto:agencymogilev@ya.ru)



Belarus, Mogilev,  
boulevard Yubileynyi, 21

- The following major benefits related to the implementation of the project are provided in connection with the conclusion of the investment agreement



- VAT deduction
- Exemption from VAT
- Land plots are granted for rent without auction

## INVESTMENT AGREEMENT

- The following benefits related to the implementation of the project are provided in connection with the location of the land plot



- 0% income tax VAT
- Exemption from custom import duties
- Exemption from payment of the state fee for issuing a license

## SMALL TOWNS AND RURAL AREAS

- The following benefits granted to the investors for implementation of the project in the South-Eastern region of Mogilev Region



- 10% income tax
- 24% pension insurance
- Financing the costs of creating engineering and transport infrastructure

## SOUTH-EASTERN REGION OF MOGILEV REGION



+375 222 74 61 91  
+375 44 582 28 18



[agencymogilev@ya.ru](mailto:agencymogilev@ya.ru)



Belarus, Mogilev,  
boulevard Yubileyniy, 21





Joint Stock Company  
"MOGILEV REGION DEVELOPMENT AGENCY"

**marr.by**

# WELCOME TO MOGILEV REGION!



+375 222 74 61 91  
+375 44 582 28 18



[agencymogilev@ya.ru](mailto:agencymogilev@ya.ru)



Belarus, Mogilev,  
boulevard Yubileyniy, 21